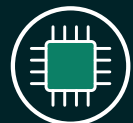


Share your data at the **EUR Data Repository**



1. Prepare your data

Before uploading make sure your dataset is properly organized. Also take care of any privacy, legal, and data protection issues before hand.

Are you not quite sure about your preparations? Your faculty data steward can help you preparing your data.



2. Login

Log in with your ERNA ID and password at datarepository.eur.nl

First time? After login, an account will automatically be created.



3. Upload your data

Click 'Upload' in the upper right corner and drag your files to the upload box or use the browser function.

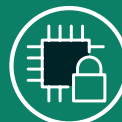
You can upload one file or a group of files that together form your dataset. A dataset is the collection of all the files that underly your publication.



5. Choose a license

In the same pop-up form, specify how others may use your data by choosing a license.

The default license is CC-BY 4.0, which allows others to use your data, as long as they credit you.



6. Open up your data

All datasets are published open by default. If this is for some reason, such as privacy, legal, or other, not (yet) desired you can always apply an embargo.



7. Reserve a DOI

Before publishing your data you can reserve a DOI to include in your paper when you submit it to a journal. You can also generate a private link that allows you to share your data for e.g. peer review before it is published.



8. Submit your dataset for review

When you have finished uploading your data and have filled in the pop-up form, simply tick the 'publish' box at the bottom of the form. Your dataset will be submitted for review.



9. Awaiting approval

A reviewer checks your upload and may contact you to discuss changes. When your upload is approved you will be notified of its publication.



10. Congratulations!

Your dataset has been published in the EDR. The data is stamped with a DOI to help you track the attention, potential impact and reach of your research.



4. Describe the data

Fill out the pop-up form and describe your dataset by use of Title, Author, Abstract, and Keywords. Tips will appear on the right side to help you fill out the fields.

Include as much information as possible. This will make your data more discoverable and reusable to others.