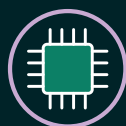


Share your data at the **EUR Data Repository**



1. Prepare your data

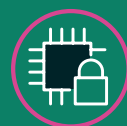
Before uploading, make sure any privacy, legal, and data protection issues are addressed.

Need help? Contact the privacy officer, legal officer, or data steward at your faculty. Or contact the Library for EDR support at: datarepository@eur.nl

2. Login

Log in with your ERNA ID and password at datarepository.eur.nl

First time? After login, an account will automatically be created.



6. Restrict access to your data

If necessary, set additional access restrictions. You can apply an embargo or make data available on request only.

doi

7. Reserve a DOI

Generate a private link and reserve a DOI before publishing. When sharing data, evidence of data sharing, or peer review of data is required, you might want to keep your datasets private until the paper is published

5. Choose a license

In the same pop-up form, specify how others may use your data by choosing a license.

The default license is CC-BY 4.0, which allows others to use your data, as long as they credit you.



4. Describe the data

Fill out the pop-up form, provide information describing your dataset like: Title, Authors, Description. Tips will appear on the right side to help you fill out the fields.

Include as much information as possible. This will make your data more discoverable and reusable to others.



8. Publish

When you have finished uploading your data and have filled out the form, tick the 'Publish' box at the bottom. This will send your dataset for review. Publication deadline? Contact the Library for EDR support at: datarepository@eur.nl



9. Review process

A reviewer checks your upload and may contact you to discuss changes. When your upload is approved you will receive a notification.



10. Congratulations!

Your dataset has been published and is now available in the EDR and the wider world.

The data is stamped with a DOI to help you track the attention, potential impact and reach of your research.

3. Upload your data

Click 'Upload' in the upper right corner and drag your files to the upload box or use the browser function.

You can upload one file or a group of files that together form your dataset. A dataset is the collection of all the files that underly your publication.



More info

Check the webpages of the [EUR Data Repository](https://datarepository.eur.nl)
Contact: datarepository@eur.nl